



Installation Manual

Acumen[®] Remote Monitoring System

Manual Driver Installation Instructions For Windows PC (all versions)

T004FE

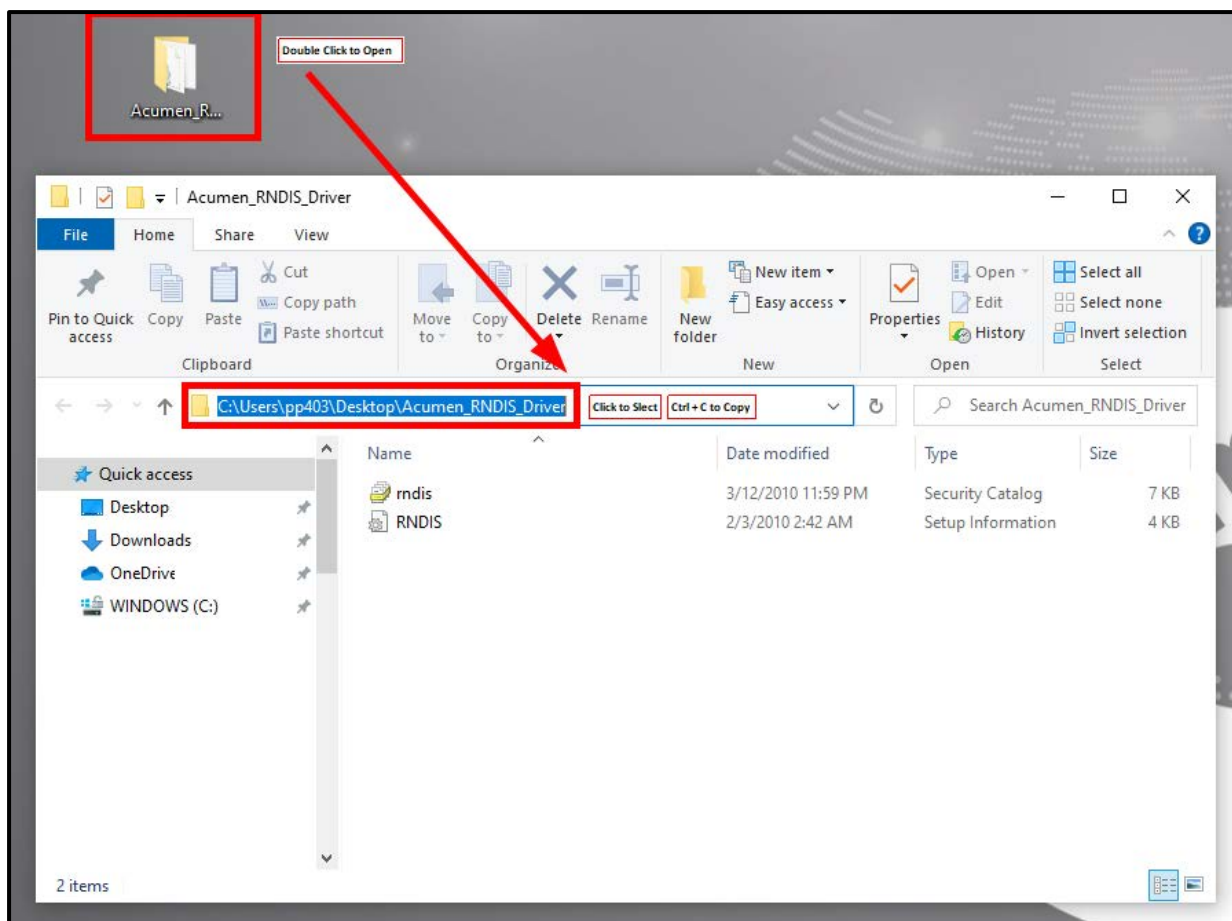
T005FA

T005FB

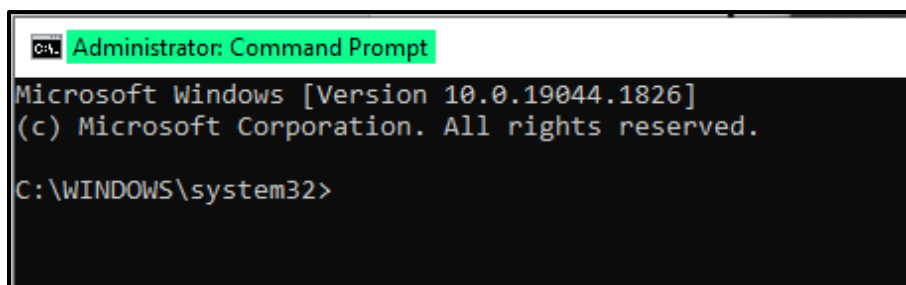
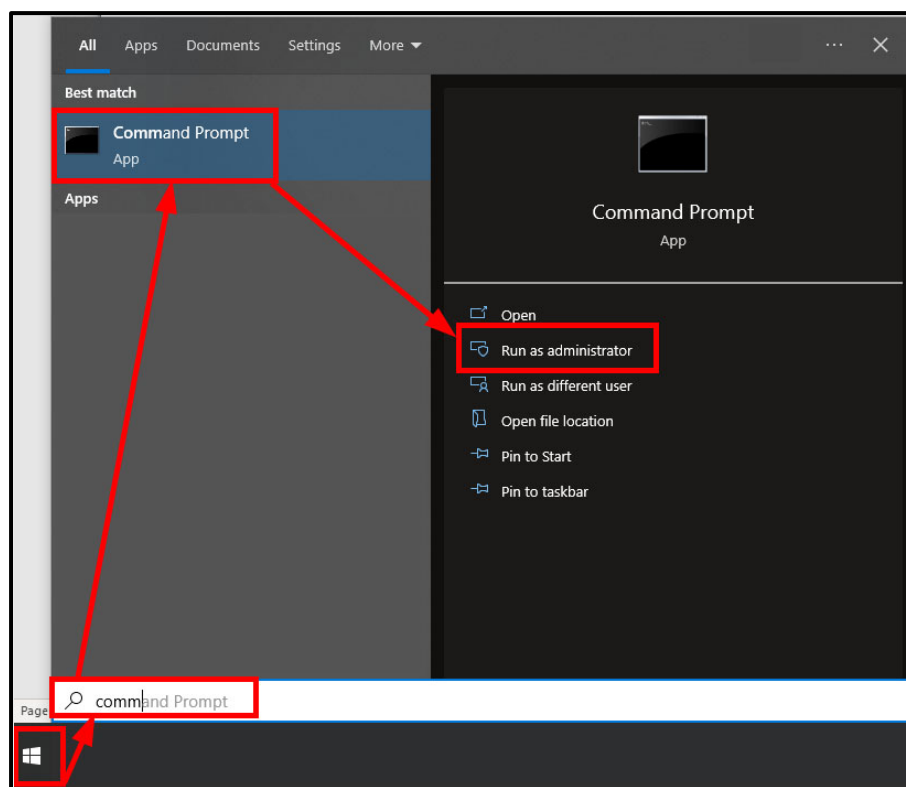
1. Download Acumen_RNDIS_Driver.zip file using the following link. Save to a known file location.

[Click to Download Driver](#)

2. Right click zip folder and unzip contents. After unzip is complete, there will be a normal folder named *Acumen_RNDIS_Driver*.
3. Locate *Acumen_RNDIS_Driver* folder and double click to open. A window will open showing the contents of the folder. Click in the address bar of the window to select the file path. Use the **Ctrl+C** command to copy file path, or right click and select copy. Note: The copied file path must end with the *Acumen_RNDIS_Driver* folder name as seen in the example below.

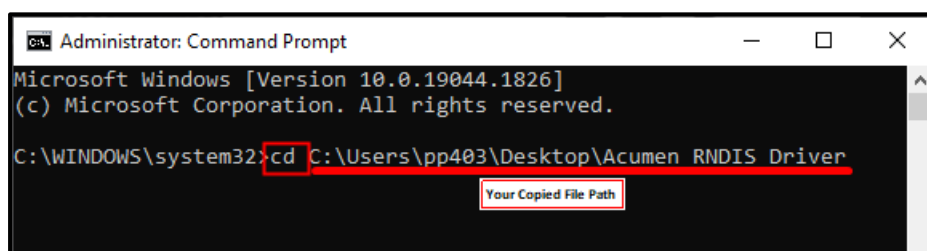


4. Once the file path is copied, click **Windows Start menu**, search for **Command Prompt**, right click on Command Prompt application and select '**Run as administrator**'. Note: Opening command prompt as administrator is required to install the driver. For Cummins employees, D-Account login is not required for this step. Command prompt can be opened as administrator using a normal WWID login. If opened correctly, the command prompt top title bar should say "*Administrator: Command Prompt*" as shown below.



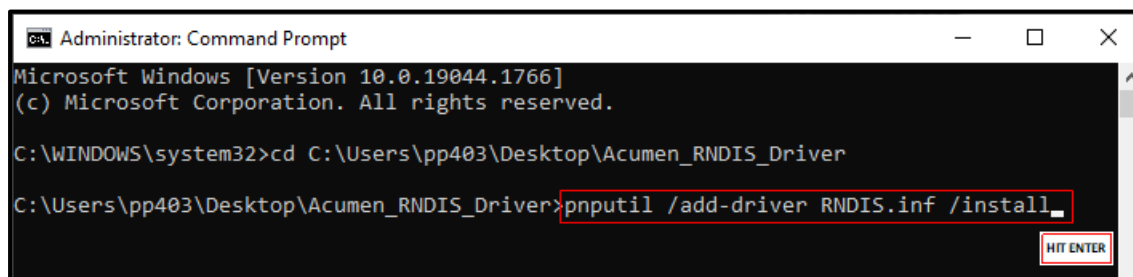
5. Within the Command Prompt Window, first edit the working directory location by typing **cd** followed by a space, followed by pasting the file path copied in step 3. The resulting command will look similar to the text shown below but can vary. Once the file path is pasted into the command line, click on the **Enter** key to run the command.

```
cd C:\Users\pp403\Desktop\Acumen_RNDIS_Driver
```

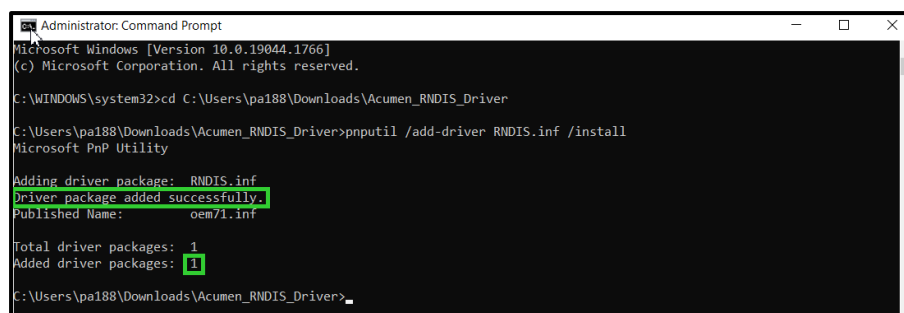


6. Copy the following command directly and paste into command prompt window. Click on **Enter**.

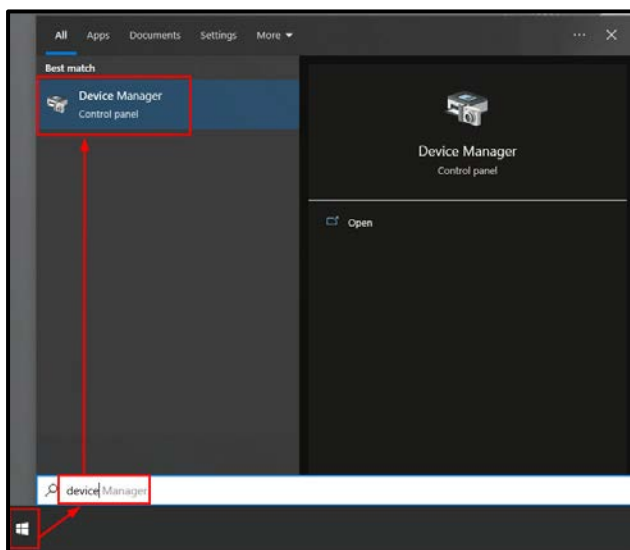
```
pnputil /add-driver RNDIS.inf /install
```



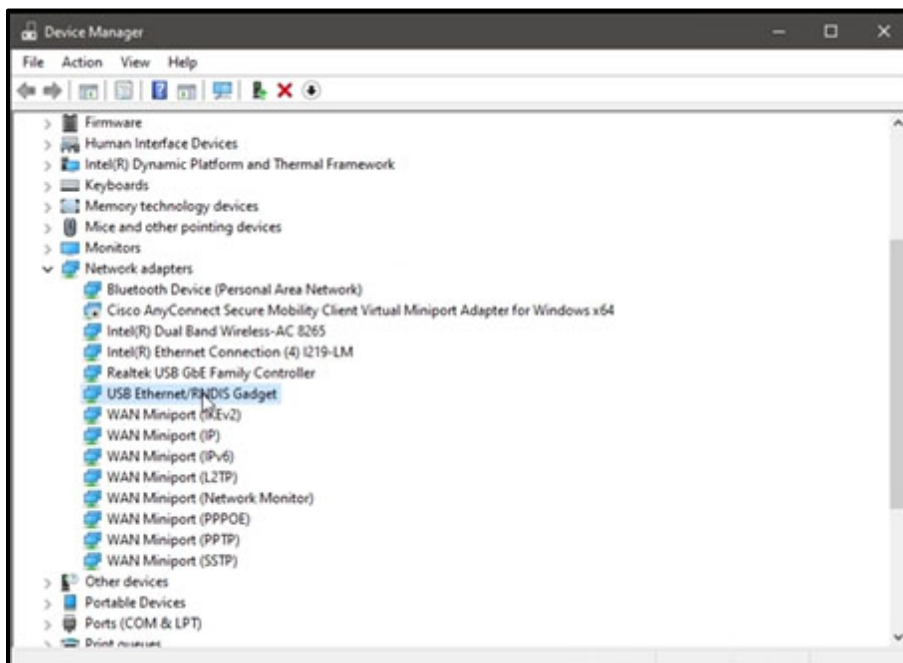
7. Command prompt will show “Driver package added successfully” if driver is installed.



8. To confirm the installation of the driver, power on the Acumen device, connect RNDIS harness to device, and plug harness USB connector to the PC USB port.
9. Click the **Windows Start button**, and search for '**Device Manger**'. Open Device Manager.

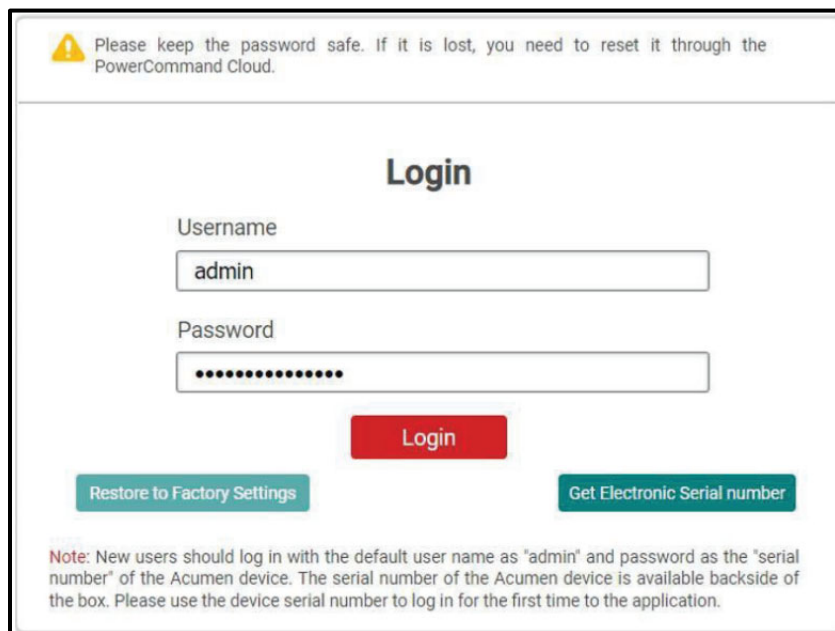


10. Under the 'Network adapters' dropdown, look for "USB Ethernet/RNDIS Gadget".



11. If 'USB Ethernet/RNDIS Gadget' device name is visible, the driver installation was successful, and the Acumen device is connected to the PC. If device name does not show, restart computer.
12. After a successful driver installation and device connection, the device user interface can be accessed.
13. Once device is powered on and connected to PC, open Google Chrome browser. Enter the following address into URL. Press **Enter** key.

`https://169.254.0.1:5000/`
14. A warning will show on the screen. Click **Advanced** and click **Proceed**.
15. The user interface login will show on the screen. Use the following login information.
 - a. Username: admin
 - b. Password: Device IMEI (for first time login only)



16. Refer to the Acumen Owner Manual (A065U632) or the User Interface Guide (A072L544) for further instructions on the Device User Interface connection process.

cummins.com

Copyright © 2022 Cummins Inc. All rights reserved.

Cummins, the "C" logo, and Acumen are registered trademarks of Cummins Inc.

Other company, product, or service names may be trademarks or service marks of others.

Specifications are subject to change without notice.

